



kootenay **1305sq.ft**
upper 2 • elevation b • Zen package

choose your sleep space

choose from **3** optional upper
floors to suit your lifestyle

choose your look

choose from a variety of
elevation styles

choose from 4 interior packages

Nautical, Rustic, Urban or Zen
or create your own!

ask us for details

we'll help you find your perfect fit!

helen hampson **area manager**
219 Skyview Ranch Way
Skyview Ranch
t 403.453.1580 f 403.453.1581
skyviewranch@beattiehomes.com

Kootenay



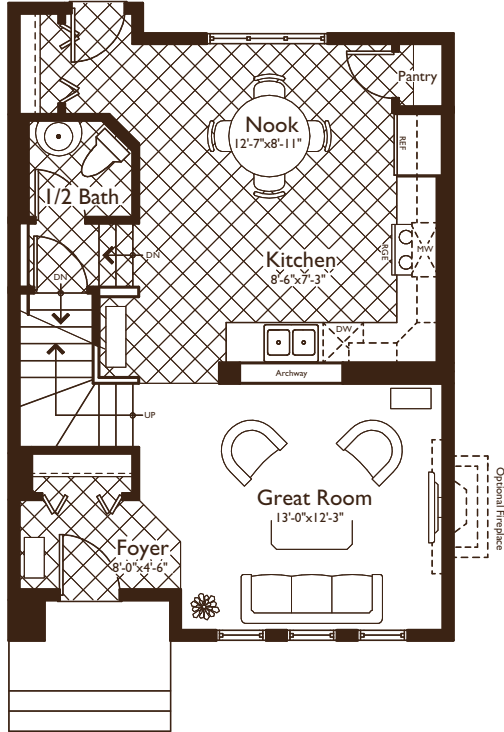
fit

BEATTIE**STARTERS**

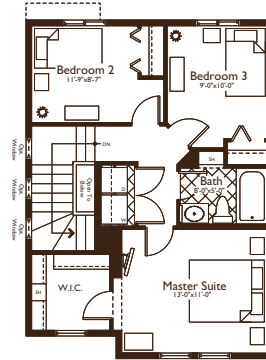
www.beattiefit.com



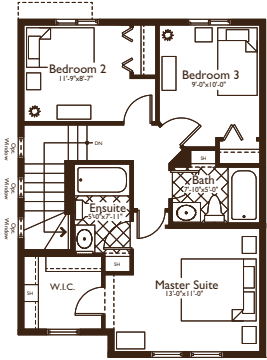
BEATTIE STARTERS gives you the opportunity to fit your perfect main floor and your perfect upper floor together to make your perfect house.



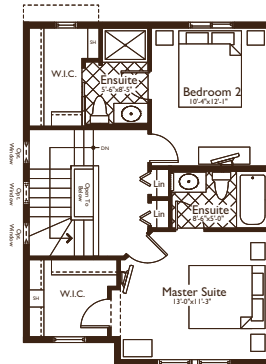
main **654 sq.ft.**



upper 1 **638 sq.ft.**



upper 2 **644 sq.ft.**



upper 3 **638 sq.ft.**

kootenay **1292 SQ.FT**

You slip the key into your lock and step from your perfect porch into your perfect Foyer where you kick off your shoes, set down your keys, and stroll into your perfect Great Room. You glance out your perfect windows and then turn on your perfect fireplace. You make your way to your impressively perfect Kitchen and search through your ample cabinet space to find the perfect snack. You stand perched at your kitchen counter where you've spent many nights laughing with your friends and you think to yourself...

“WHAT A PERFECT FIT”

1 choose your live space

2 choose your sleep space